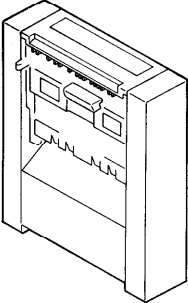
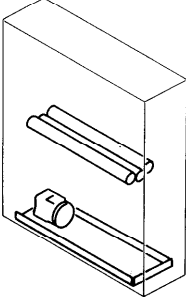
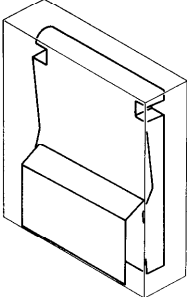
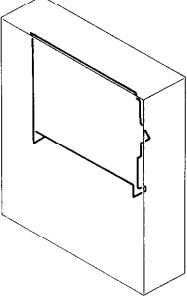
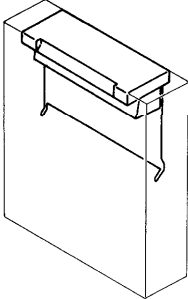


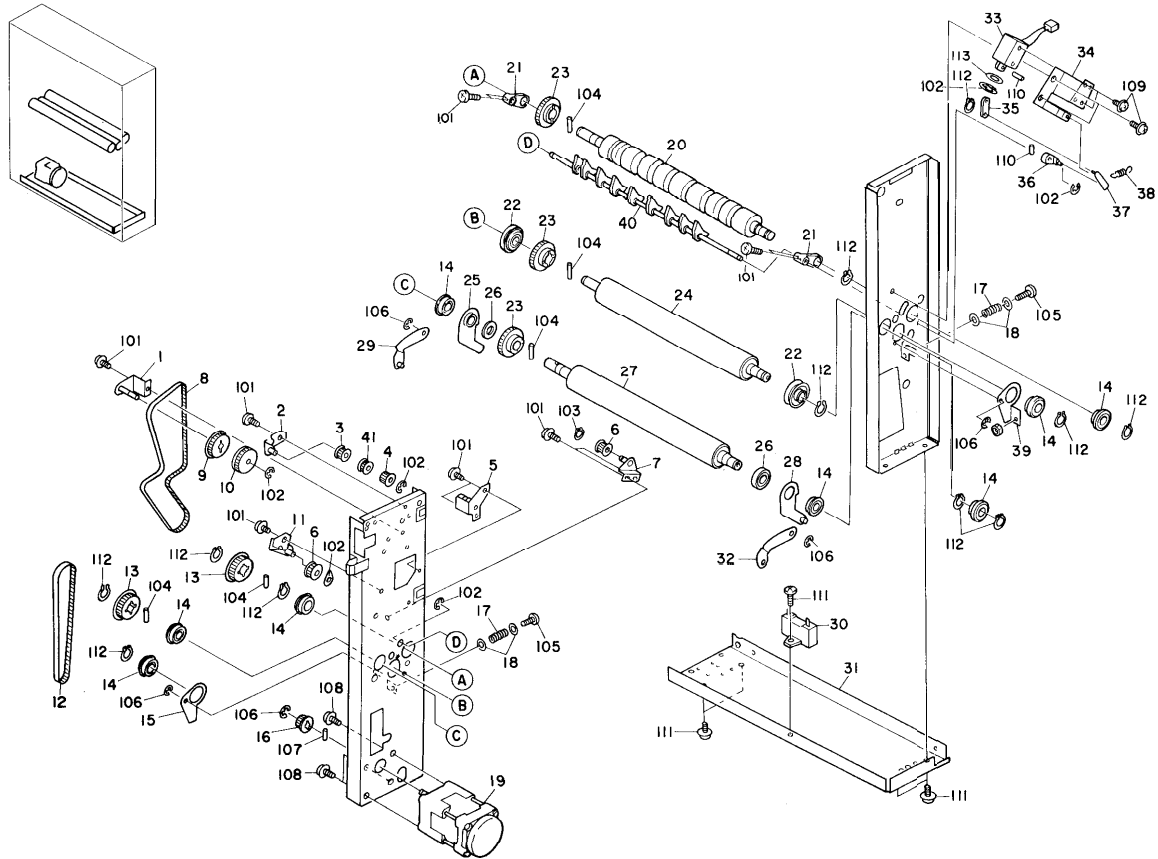
<p>1. FOLDER I</p> 	<p>2. FOLDER II</p> 	<p>3. FOLDER III</p> 	<p>4. FOLDER IV</p> 
<p>5. FOLDER V</p> 			

March 31, '88

1. FOLDER I

Index No.	Part No.	Description	Q'ty Per Assembly
*	A936 8610	Installation Procedure - English	1
*	A936 8615	Installation Procedure - 5 Language	1
*	A938 5113	IC - HN27512G-25 (Copier ROM)	1
*	A938 8600	Operating Instructions - English, NA	1
*	A938 8606	Operating Instructions - English, EU	1
*	A938 8601	Operating Instructions - German	1
*	A938 8602	Operating Instructions - French	1
*	A938 8603	Operating Instructions - Italian	1
*	A938 8604	Operating Instructions - Spanish	1
1	VFE6 0239	Front Cover	1
2	VFL6 0131	Rear Cover - 115V	1
2	VFL6 0132	Rear Cover - 220V	1
2	VFL6 0133	Rear Cover - 240V	1
3	VFA4 2321	Support Hinge	2
4	VFE6 0237	Joint Holder	1
5	VFA4 2369	Front Cover Bracket	1
6	VFE6 0244	Power Supply Cord Bracket	1
7	VFM6 0045	Interface Harness	1
8	VX62 9118	Harness Clamp	2
9	VFA4 2303	Harness Bracket	1
10	VFL6 0039	Joint Holder Bracket	1
11	VFE6 0228	stud	2
12	VFL6 0047	Stand Hinge	2
13	VFE6 0232	Unit Stand	2
14	VFL6 0042	Left Caster	1
15	VFL6 0041	Right Caster	1
16	VFE6 0201	Joint Hooker	1
17	VFS0 8238	Key Cover - LT/LDG	1
17	VFS0 8239	Key Cover A3/A4	1
18	A008 5653	Key Top	1

Index No.	Part No.	Description	Q'ty Per Assembly
101	0354 0060W	Philips Pan Head Bind Screw - M4x6	
102	0802 5094	Tapping Truss Head Screw - M4x8	
103	0960 4006W	Philips Flange Screw - M4x6	
104	0960 4005W	Philips Flange Screw - M4x5	

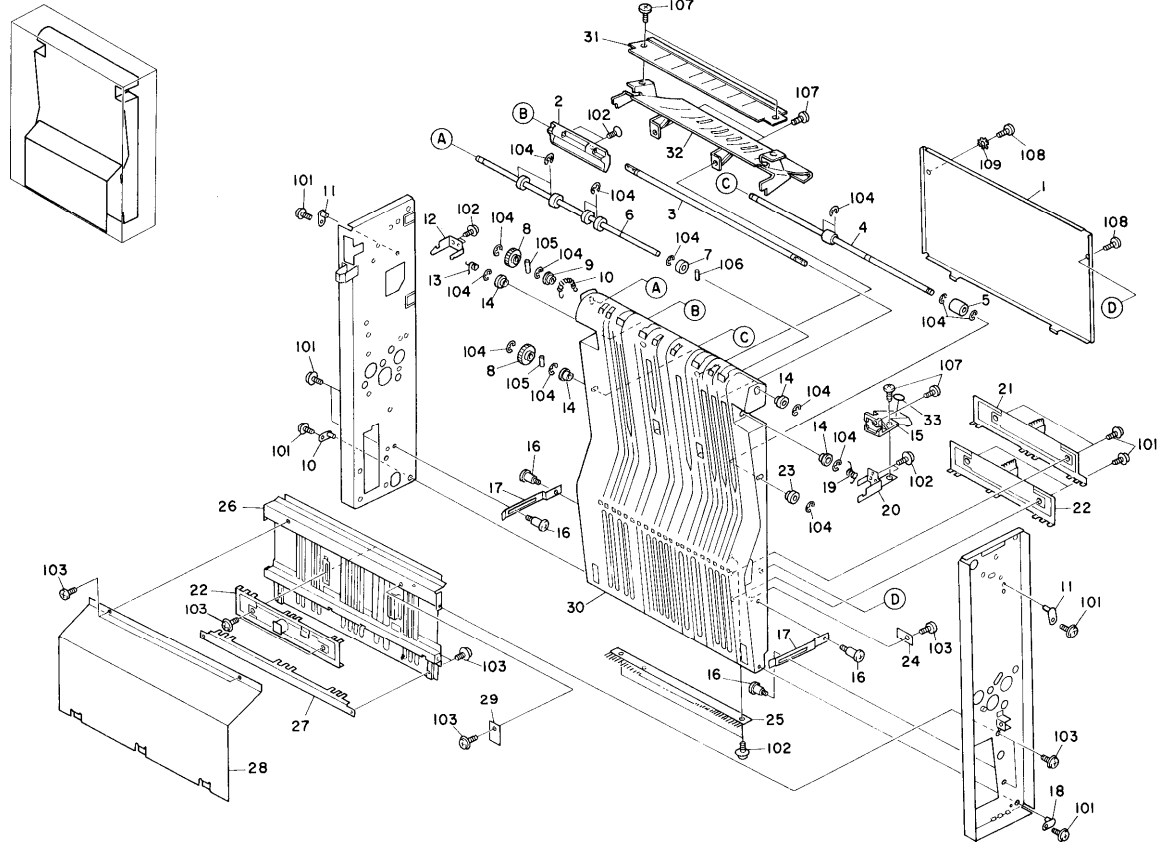


2. FOLDER II

March 31, '88

Index No.	Part No.	Description	Q'ty Per Assembly
1	VFF1 6564	Pulley Holder	1
2	VFF1 6561	Pulley Holder	2
3	VFS1 3159	Pulley - 12T	2
4	VFS2 0388	Gear - 20T	2
5	VFF1 6577	Pulley Ass'y	1
6	VFA3 7529	Idle Pulley	2
7	VFF1 6565	Tension Pulley Holder	1
8	VXF9 0148	Timing Belt - 310XL	1
9	VFS1 3163	Pulley - 24T	1
10	VFS2 0387	Pulley - 40T	1
11	VFF1 6563	Idle Pulley Holder	1
12	VXF9 0149	Timing Belt - 202XL	1
13	VFS1 3162	Pulley - 24T	2
14	VXG9 0131	Bearing	8
15	VFA4 2287	Rear Bearing Retainer	1
16	VFS1 3161	Motor Pulley	1
17	VFS2 2261	Spring	2
18	VFA4 2364	Washer	4
19	VFH7 1335	Folder Drive Motor - 220V	1
19	VFH7 1336	Folder Drive Motor - 240V	1
19	VFH7 1426	Folder Drive Motor - 115V	1
20	VFE6 0249	Right Fold Roller	1
21	VFA4 2280	Z - Fold Gate Retainer	2
22	VFA4 2285	Pulley - Middle Fold Holder	2
23	VFS2 0384	Gear - 40T	3
24	VFA4 2272	Middle Fold Roller	1
25	VFF1 6567	Rear Arm - Left Fold Roller	1
26	VFA4 2313	Spacer - 15mm	2
27	VFA4 2274	Left Fold Roller	1
28	VFF1 6566	Front Arm - Left Fold Roller	1
29	VFA4 2334	Rear Hinge - Fold Roller	1
30	A936 9512	Capacitor - 7UF240V	1
30	A936 9513	Capacitor - 6UF115V	1
30	A936 9514	Capacitor - 8UF220V	1
31	VFA4 2253	Base Plate	1

Index No.	Part No.	Description	Q'ty Per Assembly
32	VFA4 2333	Front Hinge - Fold Roller	1
33	VX62 1239	Z - Fold Gate Solenoid	1
34	VFA4 2282	Solenoid Bracket	1
35	VFA4 2365	Solenoid Link	1
36	VFA4 2283	Solenoid Lever	1
37	VFA4 2284	Solenoid Arm	1
38	VFS2 2257	Solenoid Spring	1
39	VFA4 2286	Front Bearing Retainer	1
40	VFA4 2279	Z - Fold Gate	1
41	VFA4 2332	Spacer	1
101	0960 4006W	Philips Flange Screw - M4x6	
102	0720 0050E	Retaining Ring - M5	
103	0727 0060E	Retaining Ring - M6	
104	0632 0140G	Parallel Pin	
105	0314 0300W	Philips Pan Head Screw - M4x30	
106	0720 0060E	Retaining Ring - M6	
107	0632 0080G	Parallel Key - 2x8mm	
108	0313 0080W	Philips Pan Head Screw - M3x8	
109	0353 0060W	Philips Pan Head Bind Screw - M3x6	
110	0632 0100G	Pin - 2x10mm	
111	0354 0060W	Philips Pan Head Bind Screw - M4x6	
112	0725 0140E	Retaining Ring - M14	
113	0700 0050W	Washer - 5mm	

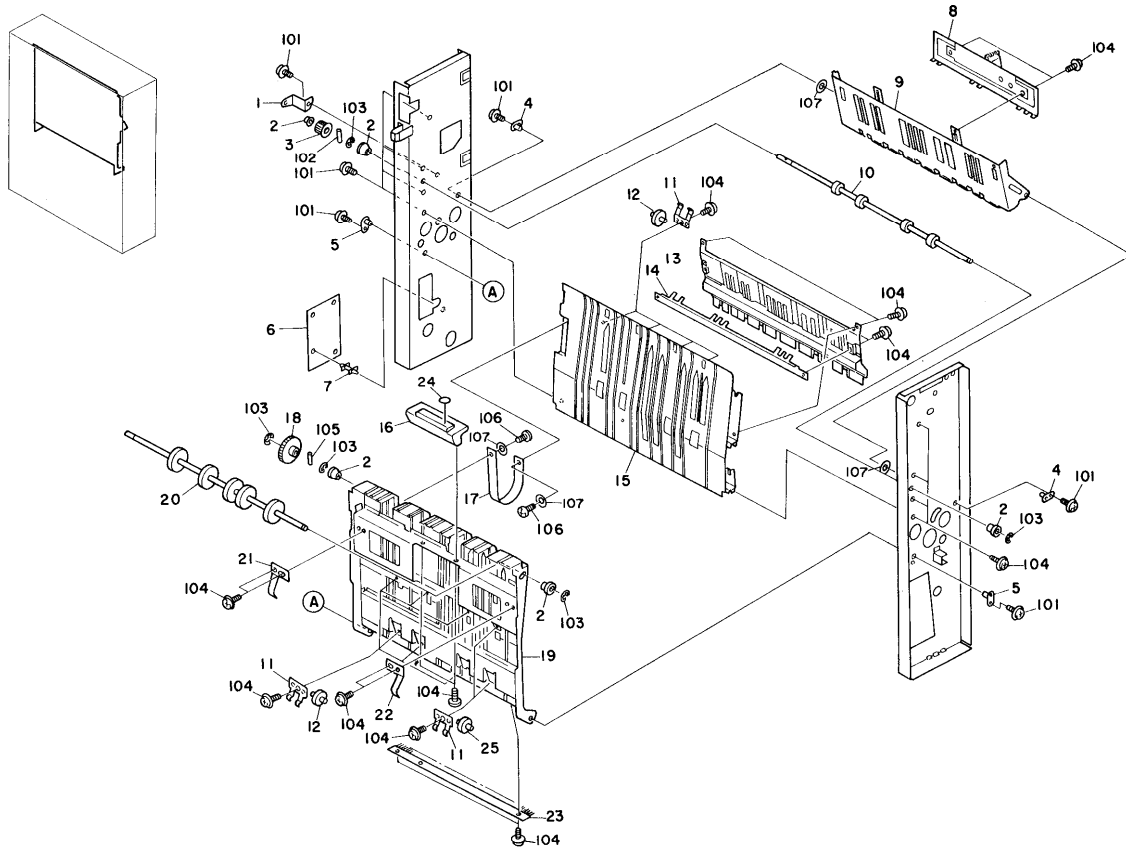


3. FOLDER III

March 31, '88

Index No.	Part No.	Description	Q'ty Per Assembly
1	VFA4 2362	Right Cover	1
2	VFE6 0242	Rear Entrance Guide Lever	1
3	VFA3 2336	Guide Lever Shaft	1
4	VFA4 2267	Shaft - Entrance Transport Roller	1
5	VFA4 6670	Entrance Transport Roller	2
6	VFA4 2265	Entrance Roller Shaft	2
7	VFE6 0231	Entrance Roller	4
8	VFS2 0386	Gear - 20T	2
9	VFS1 1435	Bushing - 6mm	1
10	VFS2 2263	Tension Spring	1
11	VFF1 6570	Stopper Stud Plate	2
12	VFA3 2338	Rear Guide Lever Angle	1
13	VFA3 2340	Rear Torsion Spring	1
14	VFS1 1213	Bushing - 6mm	5
15	VFE6 0180	Front Guide Lever	1
16	VFA2 5790	Shoulder Screw - M3	4
17	VFE6 0248	Stopper Link	2
18	VFF1 6572	Guide Stud Plate	2
19	VFA3 2339	Front Torsion Spring	1
20	VFE6 0236	Front Guide Lever Angle	1
21	VFH7 5105	Fold Solenoid - A3/LDG	1
22	VFH7 5225	Fold Solenoid - B4	2
23	VFS1 1187	Bushing	1
24	VFG1 5474	Photo Transistor	1
25	VFA1 4842	Anti Static Brush	1
26	VFA4 2255	Lower Left Entrance Guide	1
27	VFA4 2297	Entrance Guide Stay	1
28	VFA4 2360	Left Cover	1
29	VFG1 5473	LED Sensor	1
30	VFF1 6556	Right Entrance Guide	1
31	VFE6 0174	Upper Entrance Guide Plate	1
32	VFE6 0235	Lower Entrance Guide Plate	1
33	VFS0 8087	Decal - J1	1

Index No.	Part No.	Description	Q'ty Per Assembly
101	0960 4006W	Philips Flange Screw - M4x6	
102	0353 0060W	Philips Pan Head Bind Screw - M3x6	
103	0354 0060W	Philips Pan Head Bind Screw - M4x6	
104	0720 0050E	Retaining Ring - M5	
105	0632 0120G	Parallel Pin - 2x12mm	
106	0632 0140G	Parallel Pin	
107	0354 0060F	Philips Pan Head Screw - M4x6	
108	0802 5094	Tapping Truss Head Screw - M4x8	
109	0704 0040C	Toothed Washer - M4	

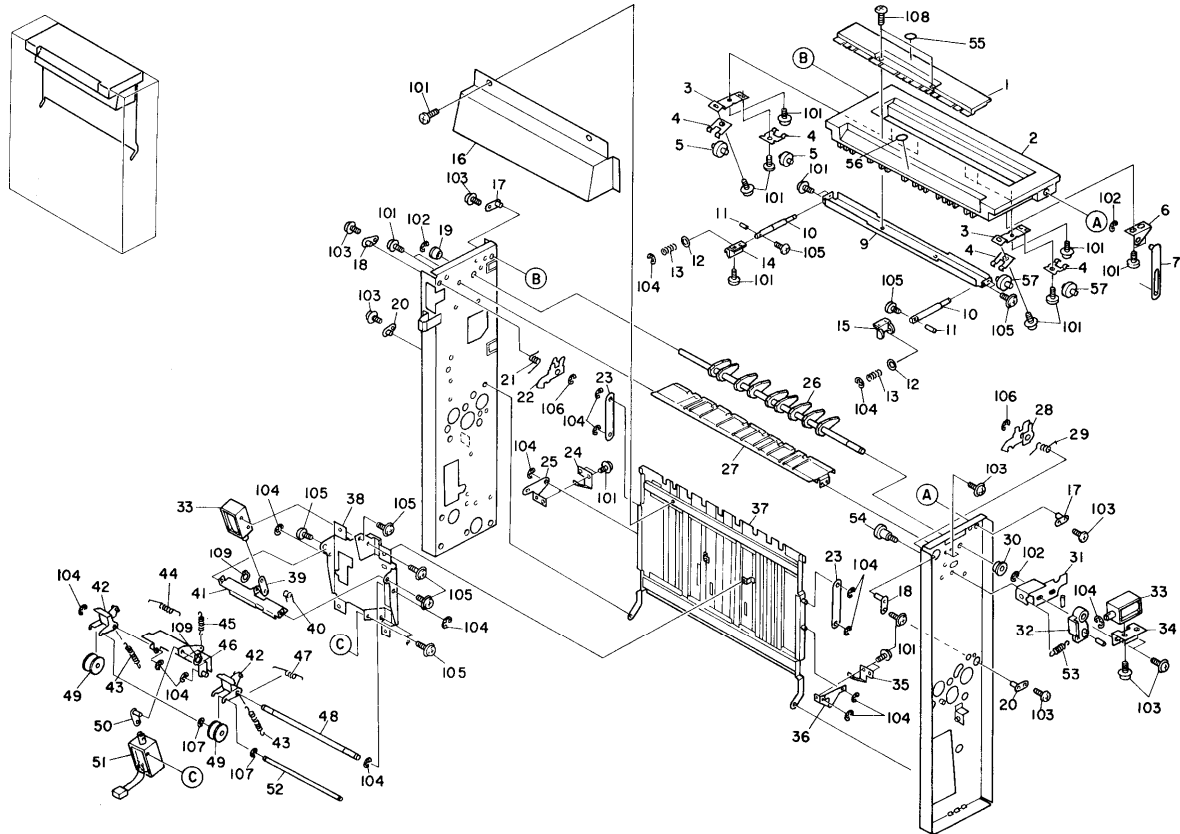


4. FOLDER IV

March 31, '88

Index No.	Part No.	Description	Q'ty Per Assembly
1	VFA4 2330	Pulley Holder	1
2	VFS1 1187	Bushing	4
3	VFS1 3159	Pulley - 12T	1
4	VFF1 6572	Guide Stud Plate	4
5	VFF1 6571	Stopper Stud Plate	2
6	VFG1 4377	Folder Control Board - 115V	1
6	VFG1 5476	Folder Control Board - 220V	1
7	VVT2 0006	Nylon Stud	4
8	VFH7 5225	Fold Solenoid - B4	1
9	VFF1 6559	Right Z - Fold Guide	1
10	VFA4 2329	Exit Transport Roller	1
11	VFA3 7418	Leaf Spring	8
12	VFA3 7419	Relay Roller	2
13	VFA4 2260	Left Z - Fold Guide	1
14	VFA3 2346	Z - Fold Stopper Plate	1
15	VFA4 2256	Right Exit Guide	1
16	VFE6 0243	Exit Guide Grip	1
17	VFA3 3597	Exit Guide Band	1
18	VFS2 0384	Gear - 40T	1
19	VFA4 2257	Left Exit Guide	1
20	VFA4 2266	Exit Roller	1
21	VFA3 2345	Rear Leaf Spring - Exit	1
22	VFA3 2344	Front Leaf Spring - Exit	1
23	VFA1 4842	Anti Static Brush	1
24	VFS0 8088	Decal - J2	1
25	VFA3 7419	Relay Roller	6

Index No.	Part No.	Description	Q'ty Per Assembly
101	0960 4006W	Philips Flange Screw - M4x6	
102	0632 0140G	Parallel Pin	
103	0720 0050E	Retaining Ring - M5	
104	0354 0060W	Philips Pan Head Bind Screw - M4x6	
105	0632 0120G	Parallel Pin - 2x12mm	
106	0354 0060F	Philips Pan Head Screw - M4x6	
107	0700 0040w	Washer - 4mm	



5. FOLDER V

March 31, '88

index No.	Part No.	Description	Q'ty Per Assembly
1	VFE6 0241	Upper Release Cover	1
2	VFE6 0238	Upper Cover	1
3	VFA4 2315	Exit Roller Plate	5
4	VFA3 7418	Leaf Spring	12
5	VFA3 7419	Relay Roller	6
6	VFA4 2359	Connector Link Plate	1
7	VFF1 6578	Cover Connector Link	1
9	VFA4 2306	Release Cover Retainer	1
10	VFA4 2307	Retainer Shaft	2
11	VFA4 2316	Pin - Retainer Shaft	2
12	VFA4 2310	Washer - 6mm	2
13	VFS2 2262	Retainer Shaft Spring	2
14	VFA4 2309	Rear Shaft Holder	1
15	VFA4 2308	Front Shaft Holder	1
16	VFA4 2361	Solenoid Cover	1
17	VFA2 1534	Arm Stud Plate	2
18	VFF1 6569	Cover Stud Plate	2
19	VFS1 1376	Bushing	1
20	VFF1 6572	Guide Stud Plate	4
21	VFA4 2327	Rear Torsion Spring	1
22	VFA4 2312	Rear Joint Arm	1
23	VFA3 2341	Connector Link	2
24	VFA4 2281	Rear Leaf Spring	1
25	VFA4 2289	Rear Connector Link	1
26	VFA4 2275	Folder Gate	1
27	VFL6 0057	Guide Plate - Folder Gate	1
28	VFA4 2311	Front Joint Arm	1
29	VFA4 2326	Front Torsion Spring	1
30	VFS1 1433	Bushing - 4mm	1
31	VFA4 2276	Solenoid Bracket Holder	2
32	VFA4 2278	Folder Gate Solenoid Lever	1
33	VX62 1240	Solenoid	1
34	VFA4 2277	Solenoid Bracket	1
35	VFA4 2290	Front Leaf Spring	1
36	VFA4 2288	Front Connector Link	1

Index No.	Part No.	Description	Q'ty Per Assembly
37	VFF1 6558	Upper Left Entrance Guide	1
38	VFA4 2347	Solenoid Bracket	1
39	VFA4 2351	Solenoid Link	2
40	VFA4 2357	Release Solenoid Spring	1
41	VFA4 2348	Solenoid Arm - Release Solenoid	1
42	VFA4 2350	Solenoid Lever - Release Solenoid	2
43	VFS2 2265	Solenoid Lever Spring	2
44	VFA4 2356	Rear Torsion Spring	1
45	VFS2 2264	Solenoid Arm Spring	1
46	VFA4 2349	Pressure Solenoid Roller Arm	1
47	VFA4 2355	Front Torsion Spring	1
48	VFA4 2353	Solenoid Lever Shaft	1
49	VFA4 2352	Pressure Roller	2
50	VFA4 2363	Solenoid Link	1
51	VX62 1239	Pressure Roller Solenoid	1
52	VFA4 2354	Pressure Roller Shaft	1
53	VFS2 2260	Spring - Folder Gate Solenoid	1
54	VFA2 5790	Shoulder Screw - M3	1
55	VFS0 8085	Decal - H1	1
56	VFS0 8086	Decal - H2	1
57	VFE6 0158	Roller	6
101	0354 0060W	Philips Pan Head Bind Screw - M4x6	
102	0720 0030E	Retaining Ring - M3	
103	0960 4006W	Philips Flange Screw - M4x6	
104	0720 0050E	Retaining Ring - M5	
105	0353 0060W	Philips Pan Head Bind Screw - M3x6	
106	0720 0060E	Retaining Ring - M6	
107	0720 0025E	Retaining Ring - M2.5	
108	0802 5094	Tapping Truss Head Screw - M4x8	
109	0727 0040G	Retaining Ring - M4	

6. CONTROL BOARD

March 31, '88

CAPACITOR

SYMBOL NO.	INDEX NO.
C01	101
C02	102
C03	101

DIODE

SYMBOL NO.	INDEX NO.
D01	104
D02	104
D03	105
D04	105
D05	105
D06	105
D07	105
D08	105
D09	105
D10	105

SYMBOL NO.	INDEX NO.
D11	105
D12	105

CONNECTOR

SYMBOL NO.	INDEX NO.
J01	106
J02	107
J03	108
J04	109
J05	110
J06	111

RELAY

SYMBOL NO.	INDEX NO.
K01	112
K01	113

TRANSISTOR

SYMBOL NO.	INDEX NO.
Q01	114
Q02	115
Q03	115
Q04	115
Q05	115
Q06	115
Q07	115
Q08	115
Q09	116
Q10	117

RESISTOR

SYMBOL NO.	INDEX NO.
R12	116

SYMBOL NO.	INDEX NO.
R01	118
R02	118
R03	118
R04	118
R05	118
R06	118
R07	118
R08	118
R09	118
R10	118

SYMBOL NO.	INDEX NO.
R11	118
R12	118
R13	118
R14	118
R15	118
R17	119
R18	118
R19	120
R20	118
R21	121

SPARK KILLER

SYMBOL NO.	INDEX NO.
R21	122
R22	124
R23	123
R24	118
R25	118

SYMBOL NO.	INDEX NO.
SK1	125

ZENER DIODE

SYMBOL NO.	INDEX NO.
Z001	126

CONTACTOR

SYMBOL NO.	INDEX NO.
CP01	103
CP02	103

6. CONTROL BOARD

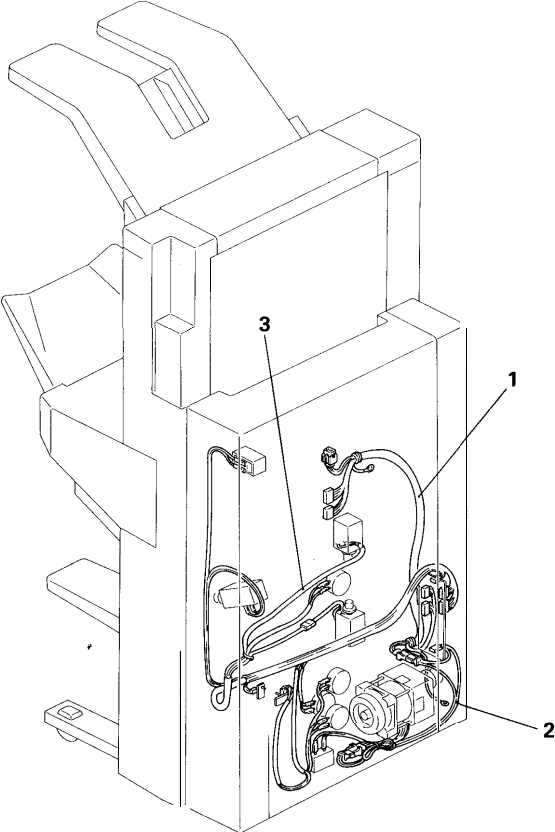
March 31, '88

Index No.	Part No.	Description	Q'ty Per Assembly
* 1	VFG14377	Folder Control Board - 115V	
	VFG1 5476	Folder Control Board - 220V	1

Index No.	Part No.	Description	Q'ty Per Assembly
101	VVC1 2351	Capacitor - 100uF 35V	
102	1606 0807	Capacitor - 0.1µF 50V	
103	VWT1 0122	Pin	
104	1401 0611	Diode - 1S1588	
105	1402 0547	Diode - SS5566B	
106	1102 1657	Connector - 2P	
107	1100 1093	Connector - 6P	
108	1100 1092	EI Connector - 4P	
109	1103 0781	Connector - 6P	
110	1100 1095	Connector - 10P	
111	1103 0773	Connector - 8P	
112	1208 1057	Power Relay - DC24V	
113	VWB1 0109	Relay - AJY2522	
114	14000135	Transistor - 25A1015Y	
115	14000206	Transistor - 2SA950Y	
116	14000072	Transistor - 2SC372Y	
117	1403 0503	Photo Coupler - PC817	
118	A936 9501	Resistor - 5.6KΩ 1/4W	
119	A936 9502	Resistor - 22KΩ 1/4W	
120	A936 9503	Resistor - 56KΩ 1/4W	
121	A936 9506	Resistor - 33KΩ 2W	
122	A936 9507	Resistor - 68KΩ 2W	
123	A936 9505	Resistor - 100Ω 1/4W	
124	A936 9504	Resistor - 33KΩ 1/4W	
125	VWR3 1058	Spark Killer	
126	VWA1 0209	Zener Diode HZ5C-1	

7. HARNESS LAYOUT FRONT VIEW

March 31, '88

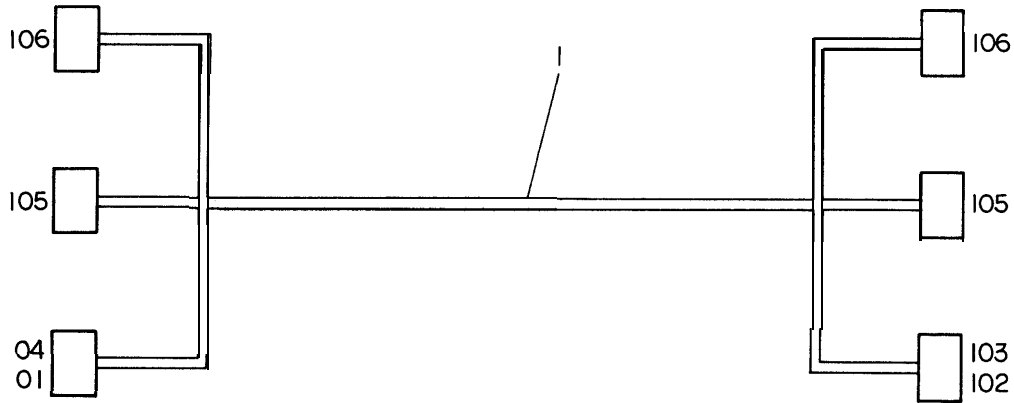


7. HARNESS LAYOUT FRONT VIEW

March 31, '88

Index No.	Part No.	Description	Q'ty Per Assembly
1	VFM6 0045	Interface Harness	1
2	VFL6 0054	AC Harness	1
3	VFG1 5477	DC Harness	1

Index No.	Part No.	Description	Q'ty Per Assembly

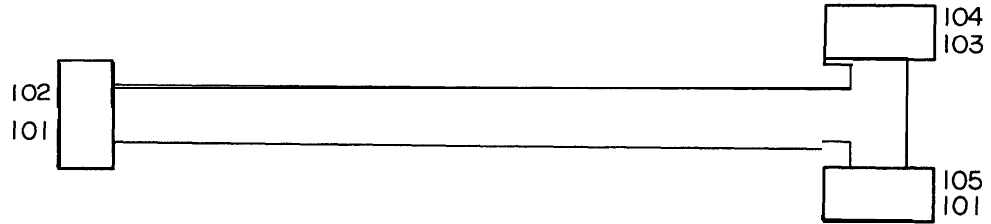


8. INTERFACE HARNESS

March 31, '88

Index No.	Part No.	Description	Q'ty Per Assembly
1	VFM6 0045	Interface Harness	1

Index No.	Part No.	Description	Q'ty Per Assembly
101	1100 1041	Pin - Mate-N-Lock	
102	1100 1042	Socket - Mate-N-Lock	
103	1102 0984	Connector - 2P	
104	1102 0986	Connector - 2P	
105	A936 9509	Receptacle Housing - 8P	
106	1102 1091	Connector - 6P	

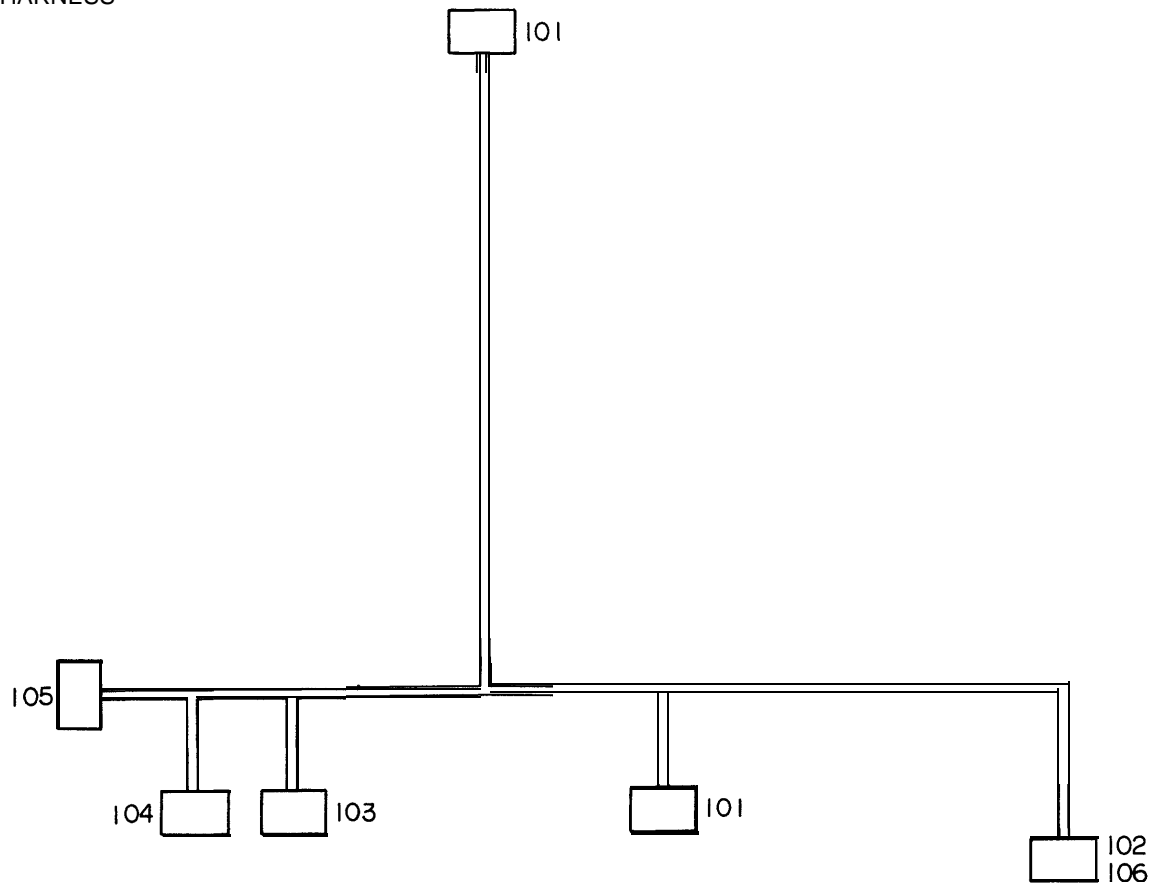


9. AC HARNESS

March 31, '88

Index No.	Part No.	Description	Q'ty Per Assembly
1	VFL6 0054	AC Harness	1

Index No.	Part No.	Description	Q'ty Per Assembly
101	1100 1042	Socket - Mate-N-Lock	
102	1102 0984	Connector - 2P	
103	1100 1247	Terminal	
104	A936 9510	Receptacle Housing - 2P	
105	VWS4 0097	Universal Plug	







March 31, '88

Index No.	Part No.	Description	Q'ty Per Assembly
1	VFG1 5477	DC Harness	1

Index No.	Part No.	Description	Q'ty Per Assembly
101	A936 9508	Receptacle Housing - 2P	
102	1102 1664	Connector - 6P	
103	A936 9511	Receptacle Housing - 4P	
104	1102 1091	Connector - 6P	
105	1103 1343	Connector - 10P	
106	VWS3 0885	Terminal	

11. DECALS

March 31, '88

1 	2 	3 	4 	5

11. DECAL

March 31, '88

Index No.	Part No.	Description	Q'ty Per Assembly
1	VFS0 8085	Decal - HI	1
2	VFS0 8088	Decal - J2	1
3	VFS0 8086	Decal - H2	1
4	VFS0 8087	Decal - J1	1

Index No.	Part No.	Description	Q'ty Per Assembly